

# 700 EASY 700 litri



## Characteristics



### A Refrigeration unit

Sparblock plug-in - monobloc ventilated system

### B Evaporator

Treated by cataphoresis, 316L stainless steel coil

### C Controllore

Capacitive touch screen

### D Door

Apertura reversibile dx/sx, autochiudente apertura a 110°, guarnizione magnetica

### E Insulation thickness

60mm - HFO polyurethane (no CFC, no HCFC)

### G External finish

Protected stainless steel, galvanized back panel and top panel

### J Floor support

Stainless steel feet, galvanized external bottom panel

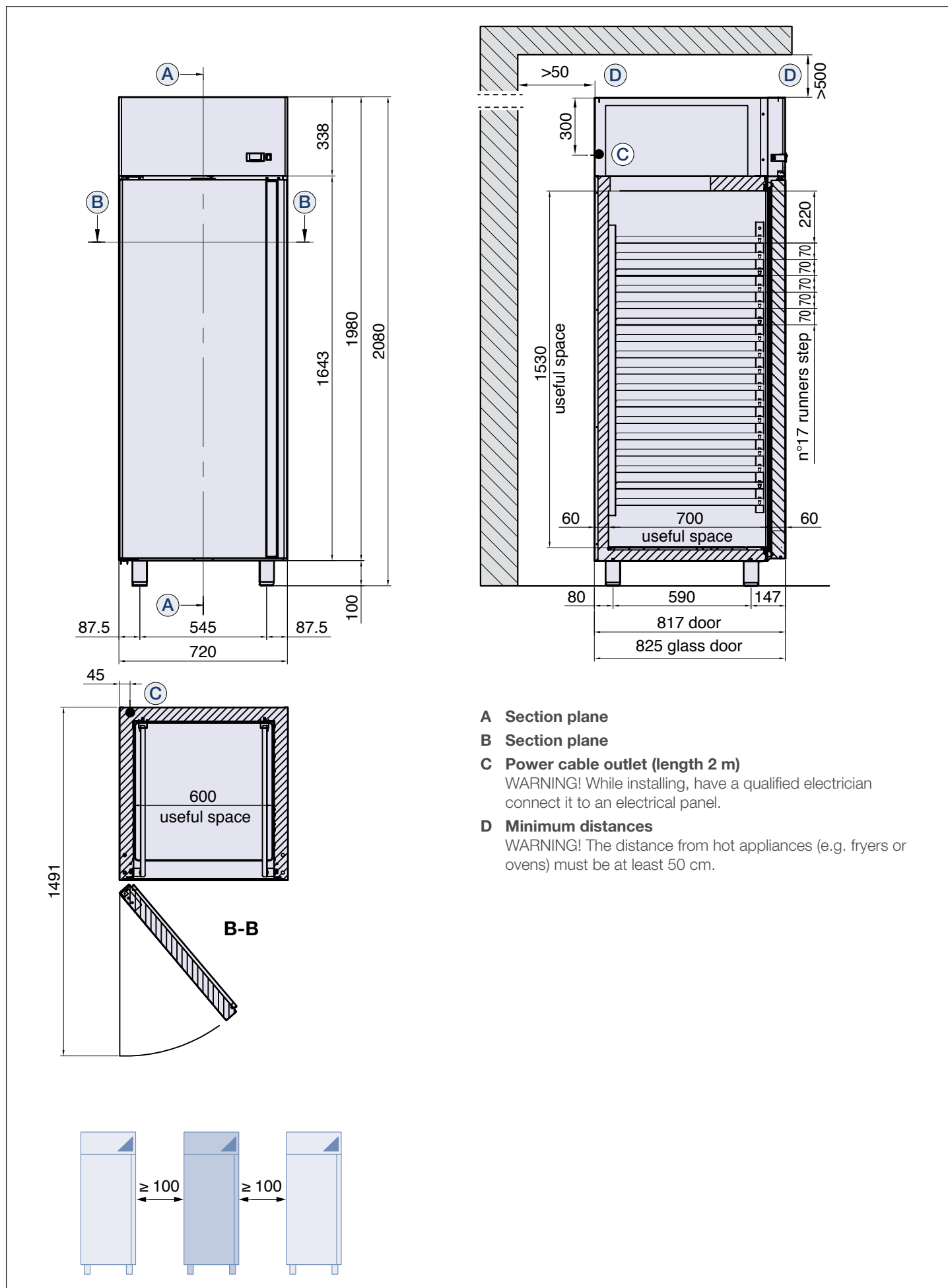
### K Rounded corners/removable parts

For easy cleaning

### M Rack pitch







Adjustable

# Technical drawing and set-up



The values are expressed in mm, unless otherwise specified, and they are indicative and not binding.

## Technical specifications

Temperature (°C)	 0/+10	 -18/-22
Model	PECC070TNGL	PECC070BTGL
Doors		
Dimensions (mm) L x D x H	720 x 825 x 2080	720 x 825 x 2080
Packaging (mm) L x D x H	750 x 860 x 2240	750 x 860 x 2240
Refrigerant	 R134a	 R507 (R404a)
Absorption (W)	410	580
Voltage (V-Hz)	230-1 50/60Hz	230-1 50Hz   230-1 60Hz
Net weight (kg)	117	130
Gross weight (kg)	131	144